

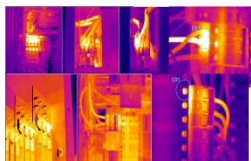
# Nationwide Thermography Services

A division of Nationwide Electrical Services Pty. Ltd.



PO Box 8037  
Ferntree Gully, Vic, 3156  
ABN: 33 026 892 821  
EC # 19645  
Email: [info@neservices.com.au](mailto:info@neservices.com.au)  
Phone: (03) 9015 9637  
Mob: 0408 250 302

## Infrared Thermographic Survey of Nominated Electrical Equipment



### Sample Report P/L

**Prepared By: - Nationwide Thermography Services**

Inspection Date: - DD/MM/YYYY

Contact Names: - TBA

Customer: - Electrical Dept.

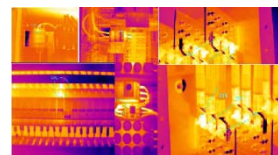
Location of Plant: - TBA

Thermographer: - Dave Lambert

Electricians: - Dave Lambert / David O'Brien

Test Equipment Used: - Trotec IC120LV Thermal Imaging Camera

Job Number Reference: - TI001101



# Nationwide Thermography Services

A division of Nationwide Electrical Services Pty. Ltd.



## Electrical Equipment Inspection List. Page 1 of 1

### Camp Area:-

- Dist. Board # 1
- Dist. Board # 2
- Dist. Board # 3
- Dist. Board # 5
- Dist. Board # 5A
- Dist. Board # 6
- Dist. Board # 6A
- Dist. Board # 7
- Dist. Board # 8
- Dist. Board # 9
- Dist. Board # 10
- Dist. Board # 11
- Wetmess DB
- Kitchen Main Dist. Board # 1
- Kitchen Dist. Board # 2
- Kitchen Dist. Board # 3
- Kitchen Dist. Board # 4

### Admin Building:-

- Admin Main Dist. Board
- Main Office Board

### Heavy Workshop Area:-

- Site Main Switchboard
- Main Dist. Board
- Dist. Board # 2

### All HV Powerlines As Requested

**Total number of reports issued      13**

# Nationwide Thermography Services

A division of Nationwide Electrical Services Pty. Ltd.



**Plant:-** Sample **Equipment:-** LHS Dropout fuse

**Location:-** HV Power line outside workshop **Priority Rating:-** MEDIUM - HIGH

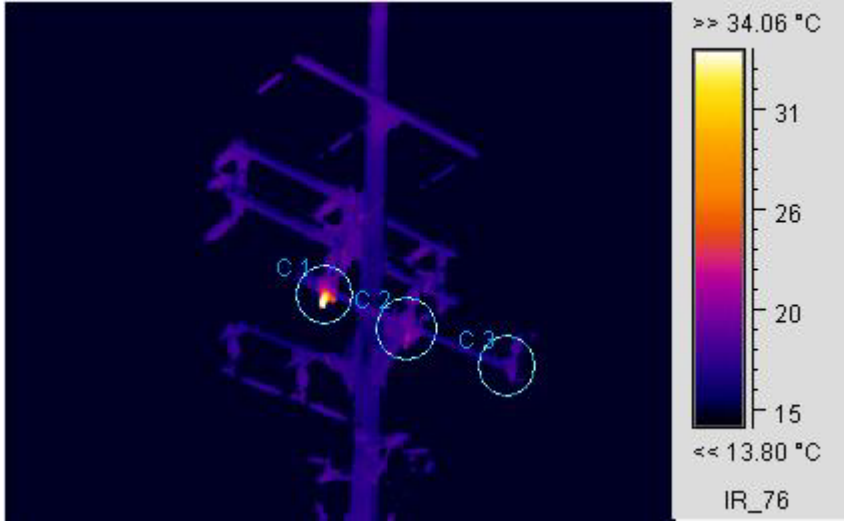


Image info	Value
Amb Temp	17.5 °C
Emissivity	1
File Name	IR_76 - sat00953.sat
Eff Dist	7m
Shooting time	---
Rel Hum	Low
Max Temp	65.85 °C
Min Temp	-23.24 °C
Chart	Value
C1:Max Temp	65.85 °C
C2:Max Temp	20.88 °C
C3:Max Temp	17.73 °C



**Possible Cause:-**

**Additional Comments:-** Localized hot spot shown at base of LHS fuse feeding Transformer.

**Corrective Action Taken:-**

**By:** **Date:**

# Nationwide Thermography Services

A division of Nationwide Electrical Services Pty. Ltd.



**Plant:-** Sample **Equipment:-** PFC, 04F-0

**Location:-** Factory Power Factor Correction Board **Priority Rating:-** **HIGH**

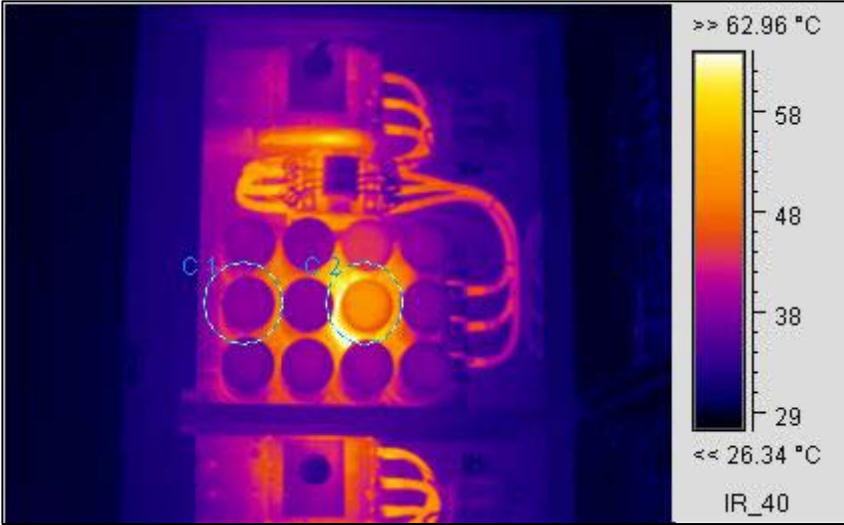


Image info	Value
Amb Temp	22.9 °C
Emissivity	1
File Name	IR_40 - sat00905.sat
Eff Dist	1m
Shooting time	---
Rel Hum	Low
Max Temp	66.29 °C
Min Temp	25.84 °C
Chart	Value
C1:Max Temp	49.91 °C
C2:Max Temp	65.85 °C



**Possible Cause:-** Worn equipment.

**Additional Comments:-** Capacitor shown to produce excessive heat compared to others.

**Corrective Action Taken:-**

**By:** \_\_\_\_\_ **Date:** \_\_\_\_\_

# Nationwide Thermography Services

A division of Nationwide Electrical Services Pty. Ltd.

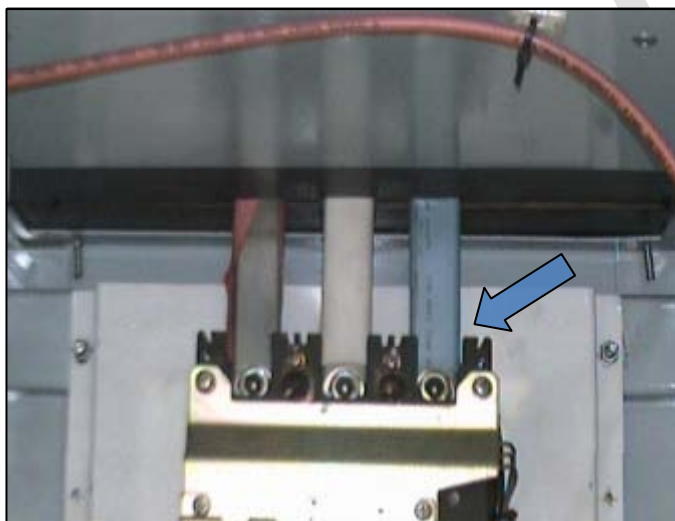


**Plant:-** Sample **Equipment:-** Main Circuit Breaker

**Location:-** Primary Crusher 1 **Priority Rating:-** MEDIUM - HIGH



Image info	Value
Amb Temp	22.3 °C
Emissivity	1
File Name	IR_16 - sat00886.sat
Eff Dist	1m
Shooting time	---
Rel Hum	Low
Max Temp	77.11 °C
Min Temp	23.42 °C
Chart	Value
C1:Max Temp	77.11 °C
C2:Max Temp	52.38 °C



Current in Amps Per Phase		
Red	White	Blue
104	105	105



**Possible Cause:-** Termination on blue phase requires further investigation.

**Additional Comments:-** Localized heat source shown on blue phase.

**Corrective Action Taken:-**

**By:** \_\_\_\_\_ **Date:** \_\_\_\_\_